



# Multiple Hot Water Boiler Package

*Bend Metropolitan Parks & Recreation District  
Administration Building*



**Engineer:** PAE Consulting Engineers

**General Contractor:** Skanska USA Building Co.

**Building:** New 2-story 21,000 sf building, containing offices, open office, restrooms, locker room, staff lounge, conference rooms, community room, storage, reception and lobby.

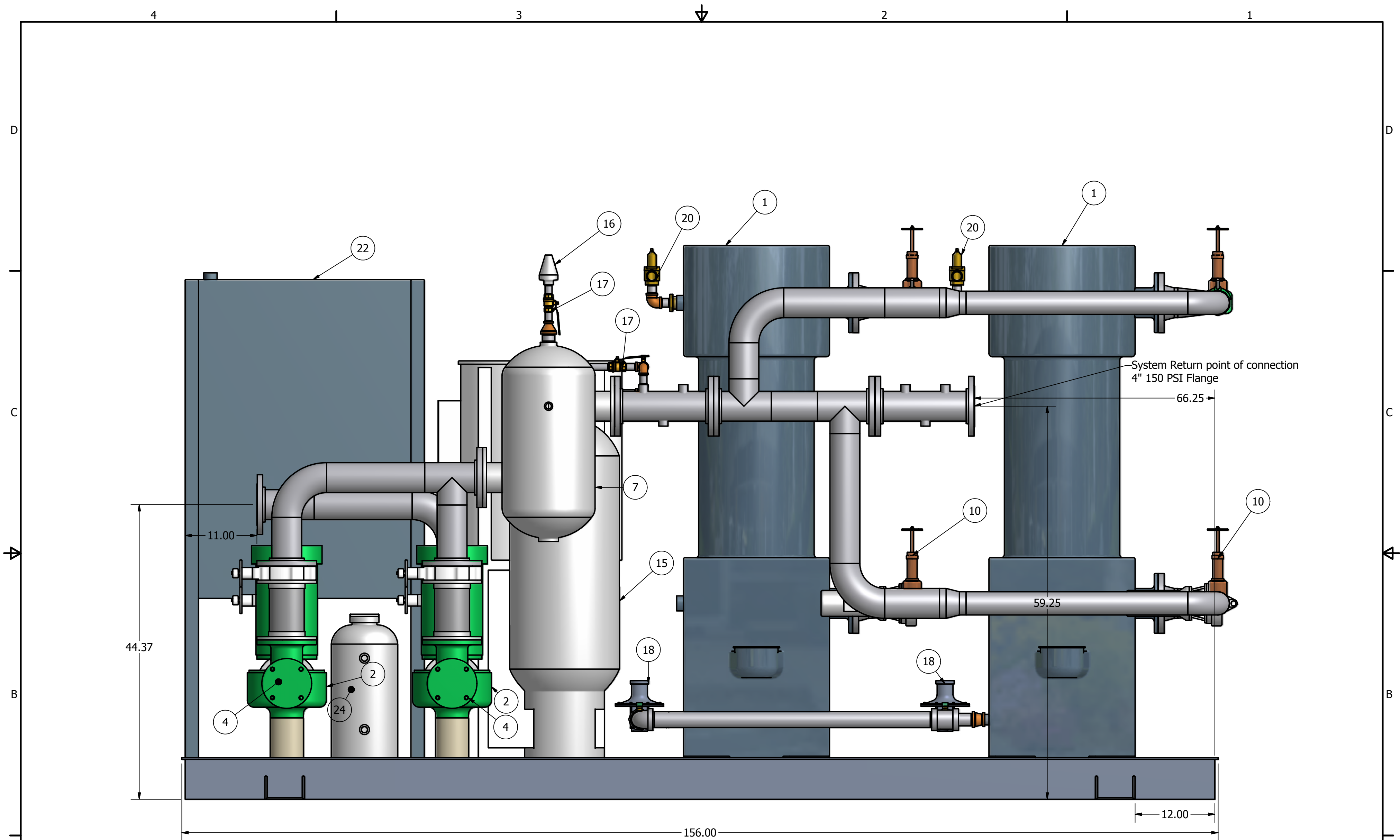
The package consists of the following equipment:

- Two (2) KC1000 Aerco hot water boilers
- Two (2) KV3009 Taco water circulation pumps w/VFD
- ACT04 Taco air separator
- CX130-3 Taco expansion tank
- Wingert glycol make up assembly
- Wingert bypass chemical feeder
- Custom control panel



**Custom Control Panel**

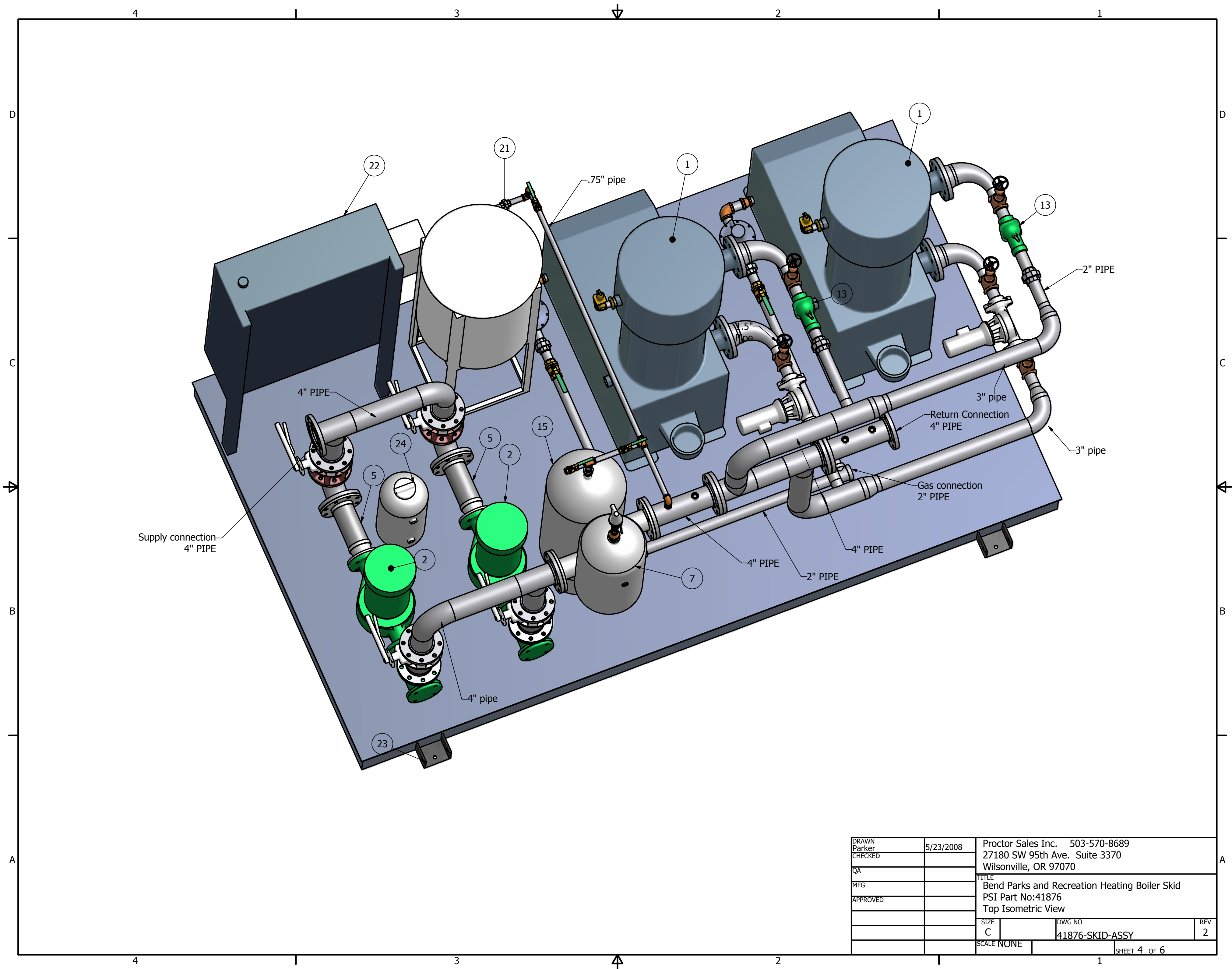
Provides boiler modulation and sequencing for outdoor air reset schedule, setpoint, or external signal.



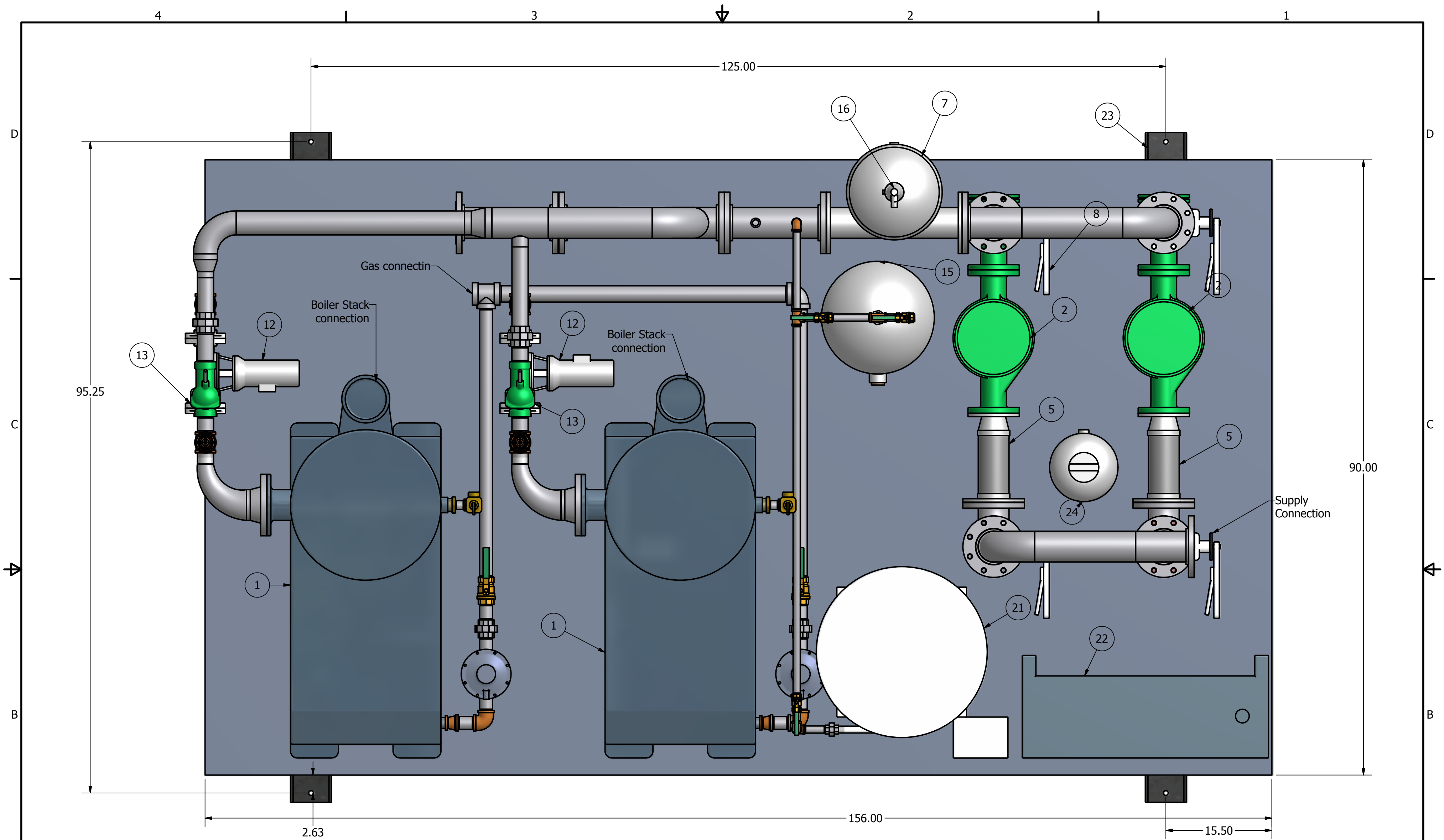
**ALL DIMENSIONS +/- .13"**

DRAWN Parker	5/23/2008	Proctor Sales Inc. 503-570-8689 27180 SW 95th Ave. Suite 3370 Wilsonville, OR 97070
CHECKED		TITLE Bend Parks and Recreation Heating Boiler Skid PSI Job No: 41876 Back View
QA		SIZE C
MFG		DWG NO 41876-SKID-ASSY
APPROVED		REV 2
		SCALE NONE
		SHEET 2 OF 6





DRAWN Parker	5/23/2008	Proctor Sales Inc. 503-570-8689	
CHECKED		27180 SW 95th Ave. Suite 3370	
QA		Wilsonville, OR 97070	
MFG		TITLE	
APPROVED		Bend Parks and Recreation Heating Boiler Skid	
		PSI Part No:41876	
		Top Isometric View	
	SIZE	DWG NO	REV
	C	41876-SKID-ASSY	2
	SCALE NONE	SHEET 4 OF 6	



**ALL DIMENSIONS +/- .13"**

DRAWN Parker	5/23/2008	Proctor Sales Inc. 503-570-8689 27180 SW 95th Ave Suite 3370 Wilsonville, OR 97070	
CHECKED		TITLE Bend Parks and Recreation Heating Boiler Skid PSI Job No: 41876 Top View	
QA		SIZE C	DWG NO 41876-SKID-ASSY
MFG		SCALE NONE	REV 2
APPROVED		SHEET 5 OF 6	